

Morphology - Plaster Carving - Japanese system

The intensive training for 3 days (30 days in Japan)

Speaker: **Alek Aronin**



Course: Learning the techniques for copying the morphology of a natural tooth on plaster, wax and ceramic. Theoretical introduction, practical implementation and optional control of homework after some time.

When: 20–22.10.2022

Where: [Augsburg](#)
[Arnold Drachenberg Dentallabor](#)

Course Fees: 1320,00 € plus VAT
Listener: 650,00 € plus VAT

Morphology - Plaster Carving - Japanese system

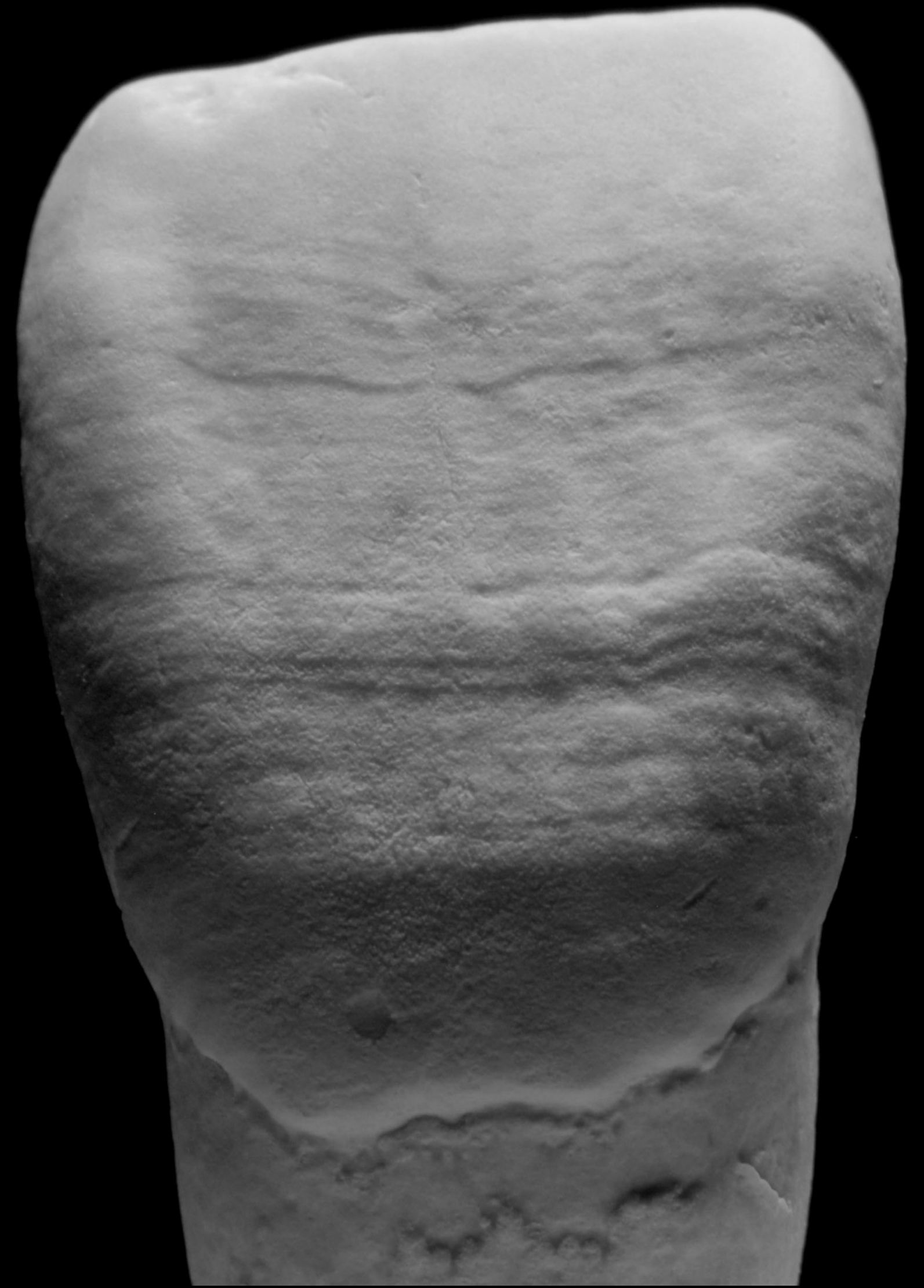
The intensive training for 3 days (30 days in Japan)

We study the external shape of natural teeth, their surface and texture.

We learn techniques for copying the morphology of a natural tooth on plaster, wax and ceramic. The intensive training lasts 3 days (30 days in Japan).

The most important, the most difficult, time-consuming, exhausting course, followed by homework.

The moment you understand the concept and learned how to make the learning process, you can improve yourself endlessly.





Introduction theory:

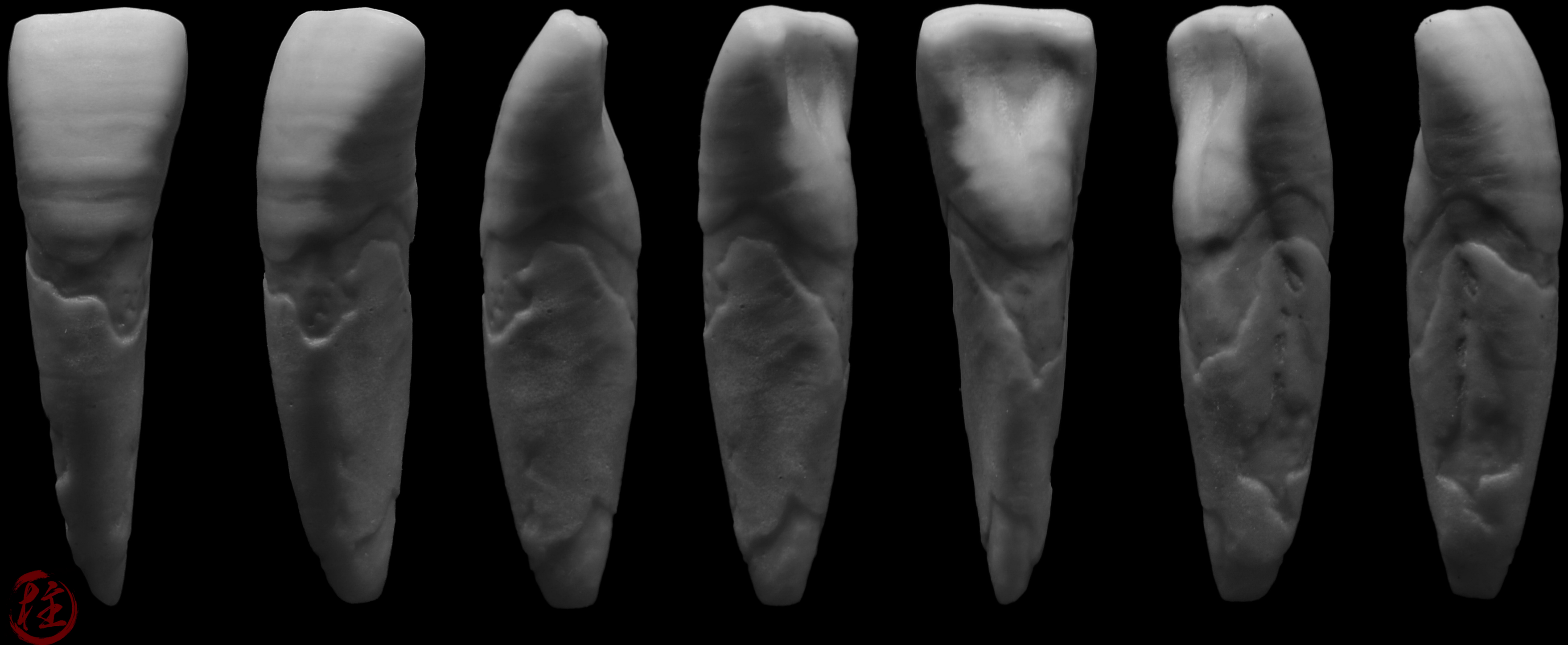
- Terminology
- Method
- Tools
- System



Plaster Carving:

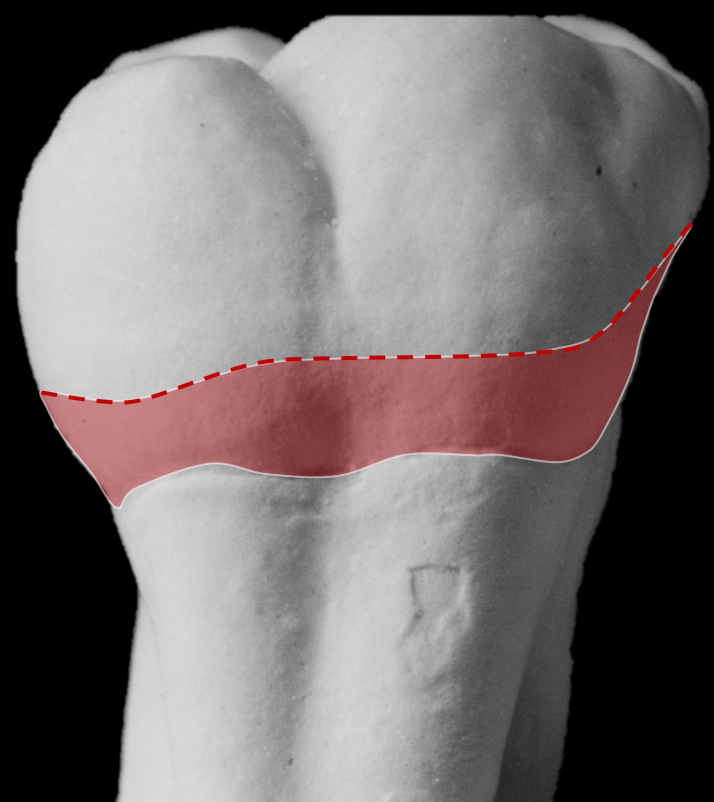
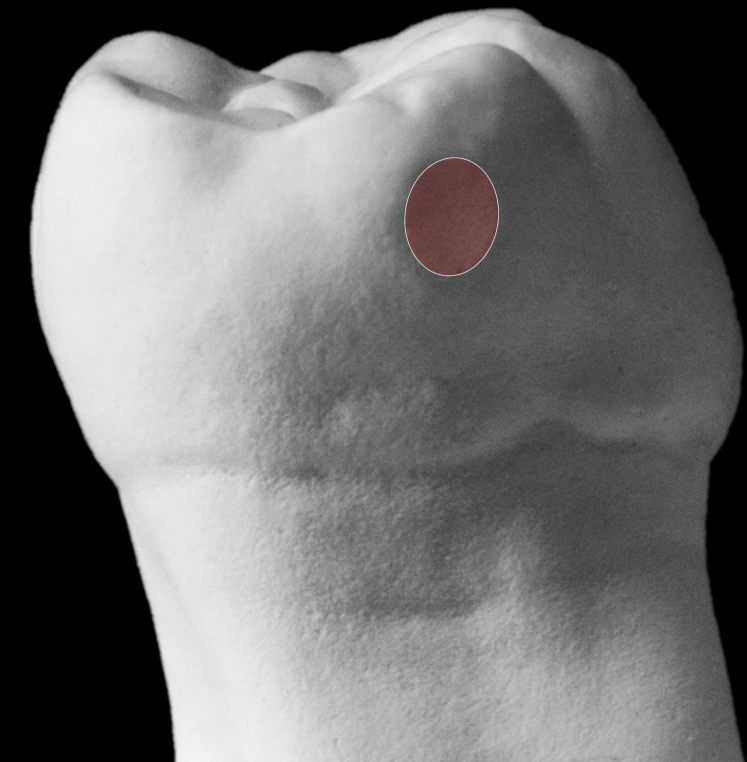
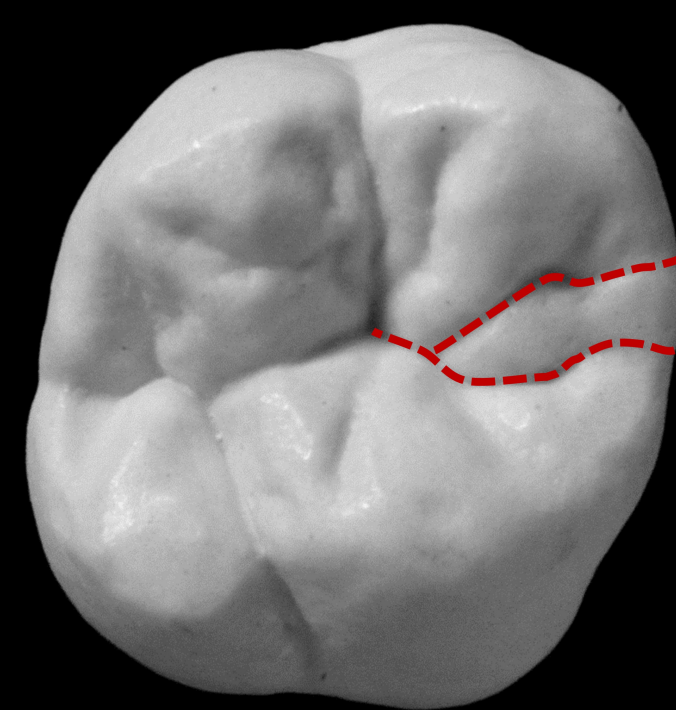
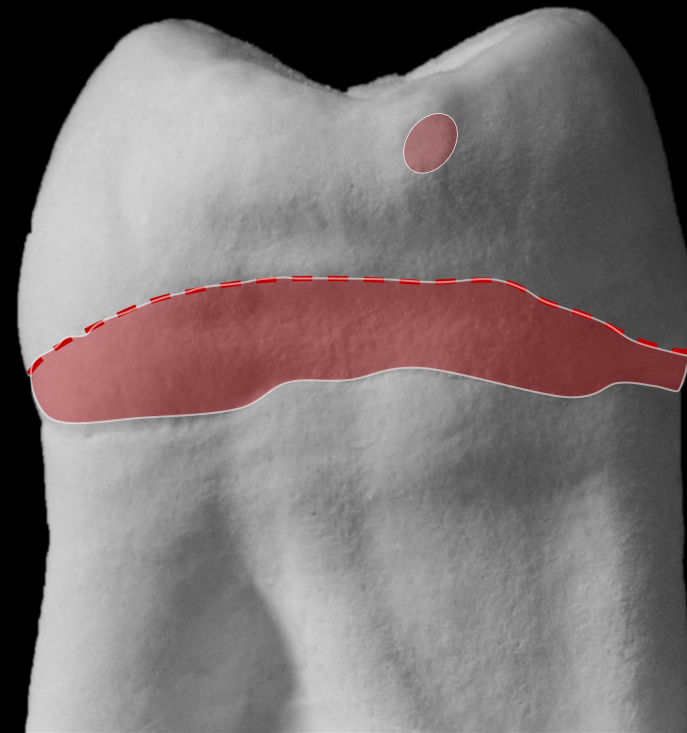
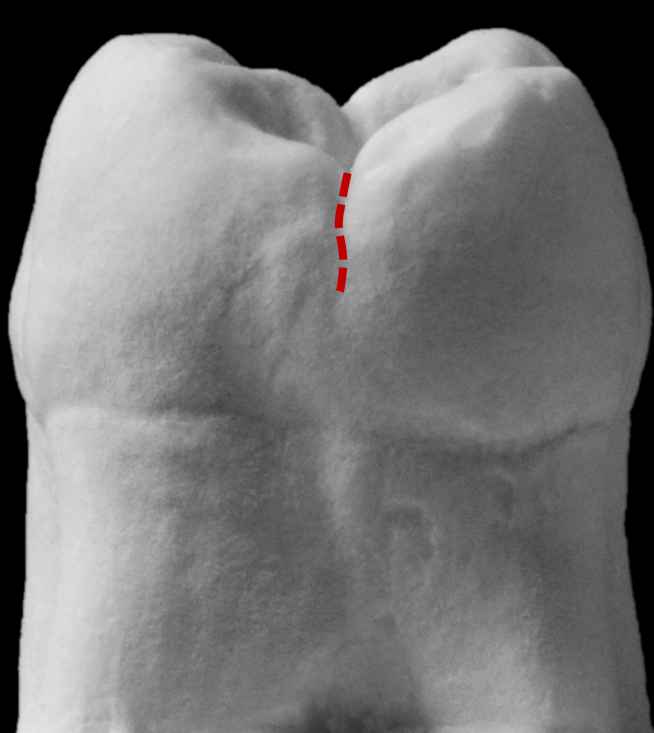
- 1 hour each tooth by timer. 2-3 teeth in a first day, Wax-up - 30 min per unit.
- Checking the work in 10 min every tooth.
- Conclusion on the process/progress - 20 min - every 3-4 teeth.

We will practising only anterior region. Posterior teeth we will passing theoretically - most important rules, functions, design.



Homework:

Review homework at next meeting, after one or 2 months (optional).



M o r p h o l o g y

